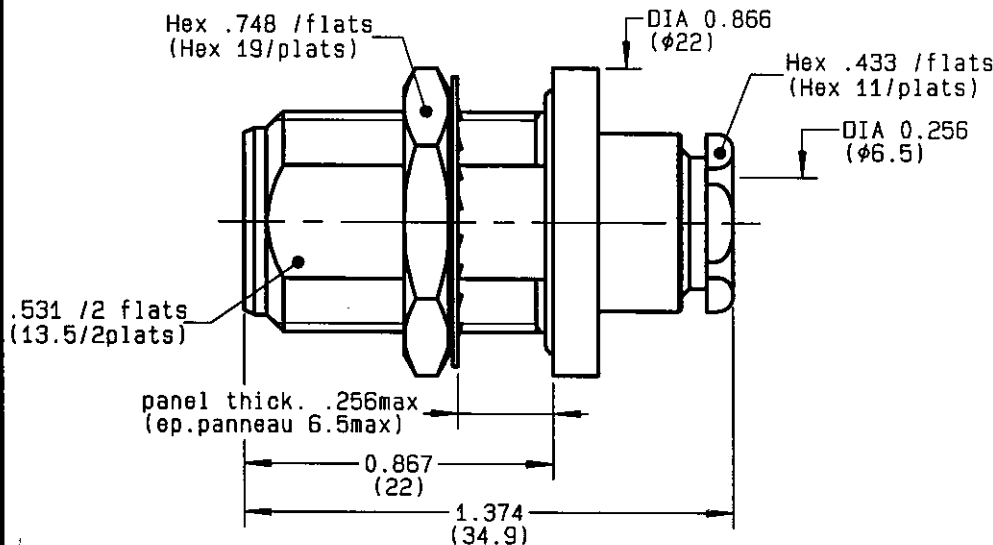


**STRAIGHT BULKHEAD JACK CLAMP TYPE
PANEL SEAL CABLE 6/75+93 S**

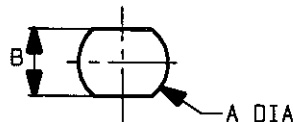
R162.328.000

SERIES

N 75



PERCAGE PANNEAU
MOUNTING HOLE



	MM		INCH	
	maxi	mini	maxi	mini
A	16.1	16	0.634	0.63
B	13.7	13.6	0.539	0.535

NOMINAL IMPEDANCE	75	Ω
FREQUENCY RANGE	0-1.5	GHz
TEMPERATURE RATING	-55/+155	$^{\circ}C$
V.S.W.R	1.06 +	x F(GHz)Maxi
RF INSERTION LOSS	0.15	\sqrt{F} (GHz) dB Maxi
VOLTAGE RATING	850	Veff Maxi
DIELECTRIC WITHSTANDING VOLTAGE	1500	Veff Mini
INSULATION RESISTANCE	5000	M Ω Mini
HERMETIC SEAL	NA	Atm.cm ³ /s
LEAKAGE (pressurized only)	NA	
MECHANICAL DURABILITY	500	Cycles
WEIGHT	33.7	gr
SPECIFICATION		

CABLES : **KX 6A**
RG 59
RG 62

OTHERS CHARACTERISTICS

CABLE RETENTION	200	N Mini
CENTER CONTACT RETENTION		
Axial force - mating end	NA	N Mini
Axial force - opposite end	NA	N Mini
Torque	NA	cm.N Mini
RECOMMENDED TORQUES		
Mating	NA	cm.N
Panel nut	500	cm.N
Clamp nut	450	cm.N

CONNECTOR PARTS: MATERIALS

BODY	: BRASS
OUTER CONTACT	: BRASS
CENTER CONTACT	: BERYLLIUM COPPER
INSULATOR	: PTFE
GASKET	: SILICONE RUBBER
OTHERS PIECES	: BRASS

FINISH

BODY	: BBR 2
OUTER CONTACT	: BBR 2
CENTER CONTACT	: GOLD 0.5 OVER NICKEL 2
INSULATOR	: -
GASKET	: -
OTHERS PIECES	: BBR 2

(all values are given in micrometers)

ISSUE
9733C00

CREATION DATE
07-APR-94

FILE PART-NUMBER



RADIALL®

GAUTIER

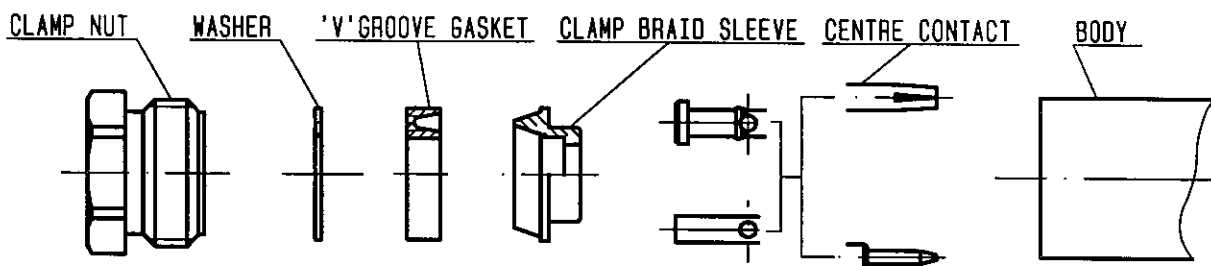
The information given here is subject to change without notice. Design changes may be in order to improve the product.

Connect to the future



R162.328.000

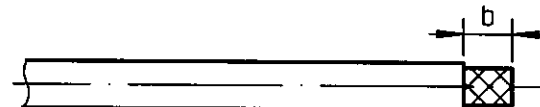
ISSUE 9733C00 SERIES N 75



①

Strip the cable .

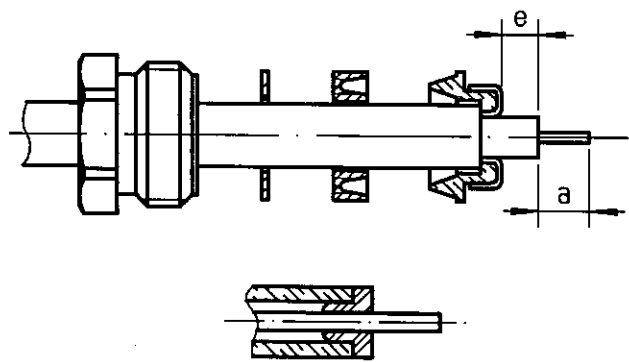
-
-
-



Stripping	a	b	c	d	e
inch	0.157	0.315	0	0	0.079
mm	4	8			2

②

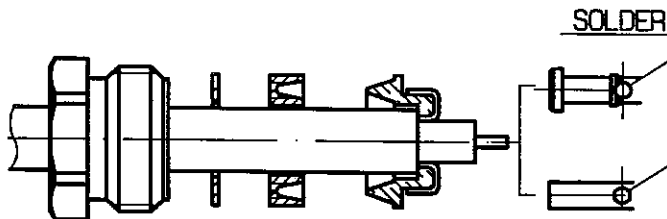
Slide the clamp nut , the washer and the 'V'groove gasket onto the cable .
 Slide clamp braid sleeve over braid .
 Fold back braid and trim off surplus braid .
 Trim back dielectric as shown .
 -
 NOTA:For air-space PE cables , "e" =0.039
 Introduce insulator onto dielectric cable .



③

Solder the cable inner conductor into centre contact .

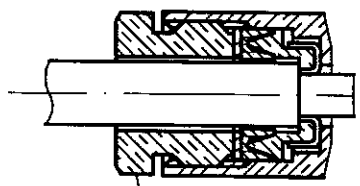
-
-
-



④

Screw sub-assembly into the connector body .
 (recommended coupling torque 39.82 in.lb)

-
-



Hex. : 0.433/flats